

OPERATION MANUAL

Thank you for buying the **goot** Automatic Solder Feeder FD-100. Please read this Owner's Operation Manual before using your solder feeder.

NOTE This operation manual is for the solder feeder unit only. When connecting with soldering iron, please buy our FD-100TA (TUBE ASSY), and refer to the FD-100TA INSTRUCTIONS.

1. SAFETY MARK DEFINITIONS
2. FOR SAFE OPERATION
3. SPECIFICATIONS
4. PACKAGE CONTENTS / NAMES OF PARTS
5. SETTING
6. HOW TO USE
7. MAINTENANCE

TAIYO ELECTRIC IND.CO.,LTD.

www.goot.co.jp E-mail: info@goot.co.jp

KEEP THIS MANUAL FOR FUTURE REFERENCE

1. SAFETY MARK DEFINITIONS

In this manual, the following safety marks are used.



WARNING

Failure to obey a safety warning could result in serious injury or death to yourself or to others, or other damages.



CAUTION

Failure to obey a safety warning could result in injury to yourself or to others, or other damages.



NOTE A note or word of advice.

2. FOR SAFE OPERATION

1. Do not use in dangerous environments. Never use it in damp, humid or wet locations (including outside), or near flammable substances.
2. Keep children and bystanders away from the unit.
3. Your solder feeder is an electrical tool used to apply the wire solder to the soldering iron tip. Do not use this for any other purpose.
4. Wear suitable apparel.
5. Connect to AC 100-240V 50/60Hz power supply.
6. Do not fold the power cord. If it is damaged, stop using immediately and turn off the power.
7. To guard from foreign objects, do not forget to attach the top cover on the feed mechanism before use.
8. Be careful when turning the feed time adjuster & the feed speed adjuster to prevent damage.
9. Make sure that the machine is grounded at all times to prevent electrical shocks.
10. Turn off the power when not in use.

3. SPECIFICATIONS

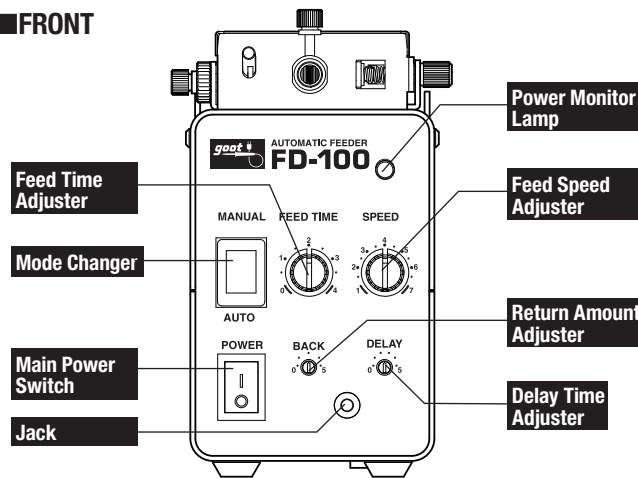
MODEL	FD-100
Voltage	110V, 120V, 130V, 220V, 230V, 240V AC 50/60Hz
Power Consumption	8W
Power Cord Length	3-prong cord 1.2m
Applicable Soldering Irons	RX-802A5 (RX-80GAS)
	RX-852A5 (RX-85GAS)
	RX-822A5 (RX-80/85GAS)
	RX-701/711A5 (RX-72GAS)
Applicable Solder Dia.	ø0.6-ø1.6 (LF solder applicable)
Solder Feed Speed	6-22mm/sec
Solder Feed Time	0-4sec
Returned Solder Amount	0-5mm (fixed speed)
Solder Feed Delay Time	0-5sec
Dimensions	82(W) × 140H(W) × 210(D)
Weight	1.5kg (w/o solder)

Printed in Japan, A5010DD00 APRIL 2013

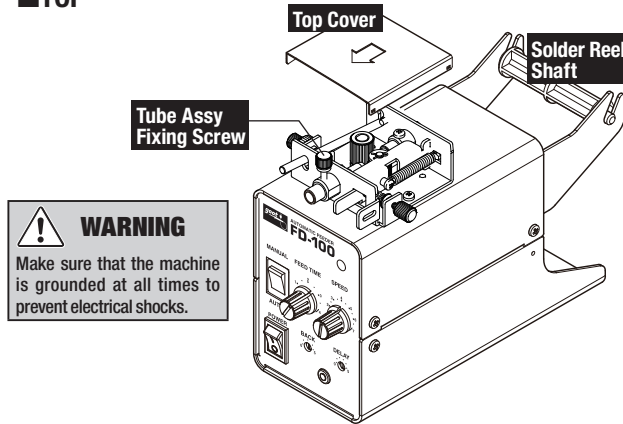
4. PACKAGE CONTENTS / NAMES OF PARTS

PACKAGE CONTENTS ■ FD-100 Unit ■ Power Cord
■ Solder Reel Shaft ■ Operation Manual

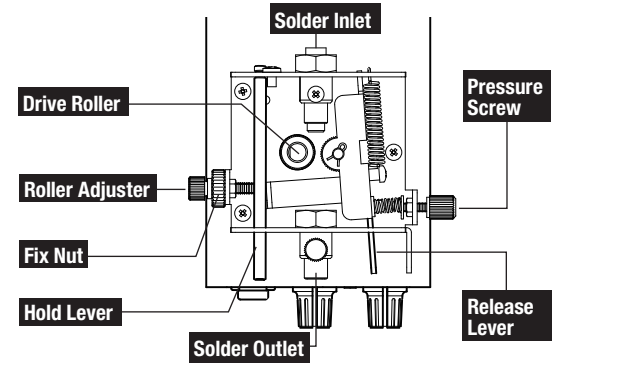
FRONT



TOP

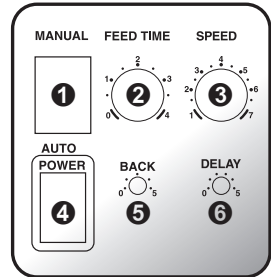


FEED MECHANISM



6. HOW TO USE

Push the solder feed switch of the FD-100TA and feed the solder. For each setting, see ① to ⑥ below.



FRONT PANEL

- ① Mode Changer
- ② Feed Time Adjuster
- ③ Feed Speed Adjuster
- ④ Main Power Switch
- ⑤ Return Amount Adjuster
- ⑥ Delay Time Adjuster

① [AUTO/MANUAL] Mode Changer

Changer to select the operation mode.

AUTO	Once the solder feed switch is pushed, the solder is fed at the fixed time & speed, regardless of the pushing time.
MANUAL	The solder is fed at the fixed speed only while the switch is pressed.

② [FEED TIME] Feed Time Adjuster (available on AUTO mode only)

Adjuster for setting the solder feed time. (0-4sec)

③ [SPEED] Feed Speed Adjuster

Adjuster for setting the solder feed speed. (6-22mm/sec)

NOTE Feed speed depends on the the solder diameter. Adjust the desired speed to each solder diameter.

④ [POWER] Main Power Switch

⑤ [BACK] Return Amount Adjuster

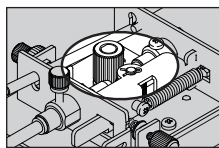
Setting for the returned solder amount after feed. (0-5mm, fixed time)

⑥ [DELAY] Delay Time Adjuster

After pushing the solder feed switch, the solder starts feeding after a set time. (0-5sec)

Purpose : Allowance for hand motion and overhaste of operator. (saves preheat time)

7. MAINTENANCE



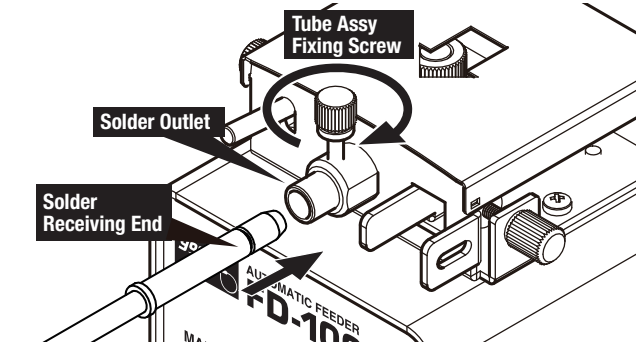
Solder scraps may accumulate in and around the drive after long-term use. To avoid getting solder scraps into the unit or other devices, remove it and clean with brush etc regularly.



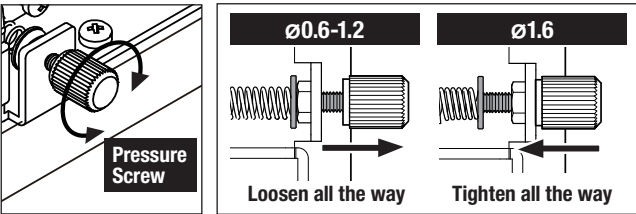
WARNING Make sure to turn off the power before maintenance.

5. SETTING (How to attach the FD-100TA)

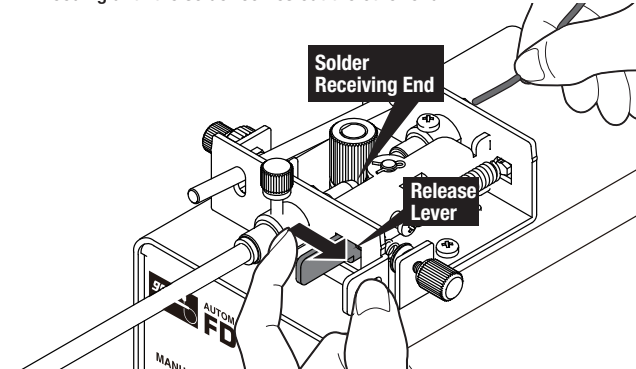
5-1. Insert the FD-100TA receiving end (sold separately) deep into FD-100 solder outlet. Tighten the tube-assy-fixing-screw.



5-2. Take off the top cover. Adjust the pressure screw to fit the solder diameter.



5-3. Open the release lever (push it to the right). Insert the solder through the FD-100 solder inlet, and the FD-100TA receiving end. Continue feeding until the solder comes out the other end.



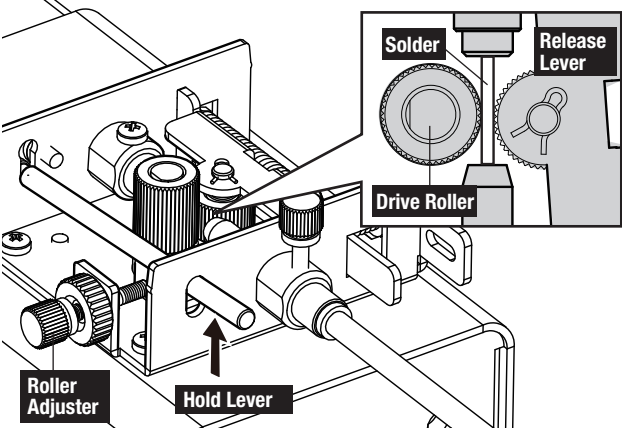
If the solder clogs in the FD-100TA when using, it may also clog the FD-100 due to buckling. In that case, take out the FD-100TA, and remove the solder clogs.

If the solder clogs occur frequently, flux may be blocking up the nozzle tip of the FD-100TA. In that case, remove and clean the flux.

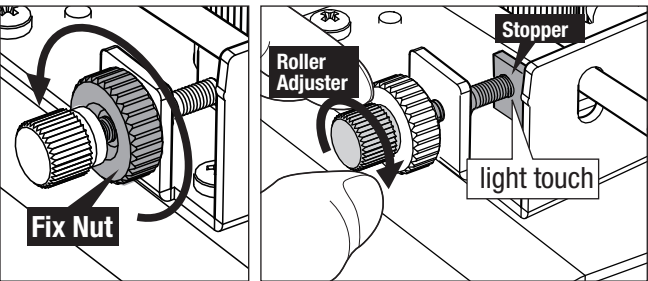
5-4. Adjust the solder pinching force. Lift up the hold lever. The solder will be pinched by the drive roller and the release lever.



NOTE If the solder is not pinched, loosen the roller adjuster.



5-5. Loosen the Fix nut (only) all the way to the left. Turn the roller adjuster until it just touches the stopper.



Check that the solder is fixed properly. If the solder is loose, the roller adjuster may have widened the gap between the rollers.

NOTE

5-6. Hold the roller adjuster, and fix the position by tightening the Fix nut (Black). Then, put on the top cover.

